

# Fluted Centralizer

**The Fluted Centralizer is a one piece design that can be used to centralize a toolstring or lower BHA in the tubing string.**

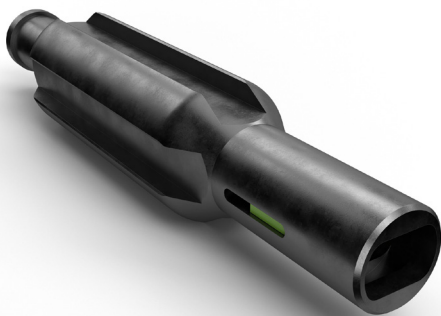
The Fluted Centralizer can also be used in some cases to drift the well bore. The fluted design allows for sufficient fluid bypass to enable efficient toolstring conveyance in well fluids.

## APPLICATIONS

- To centralize a toolstring or lower BHA
- Specific drifting applications

## FEATURES AND BENEFITS

- One piece robust design
- Special No-Go type designs can be supplied to enable tagging of the nipple profile
- The fluted design allows for sufficient fluid bypass which enables efficient toolstring conveyance in well fluids
- Bull Nose Bottom Subs available
- Connection options available to suit customer requirements



▲ All standard industry connections available



▲ No-Go type Fluted Centralizer

**Product Code:** Fluted Centralizer / 107

info@peakwellsystems.com | peakwellsystems.com

© 2017 Peak Well Systems Pty Ltd. All rights reserved.

